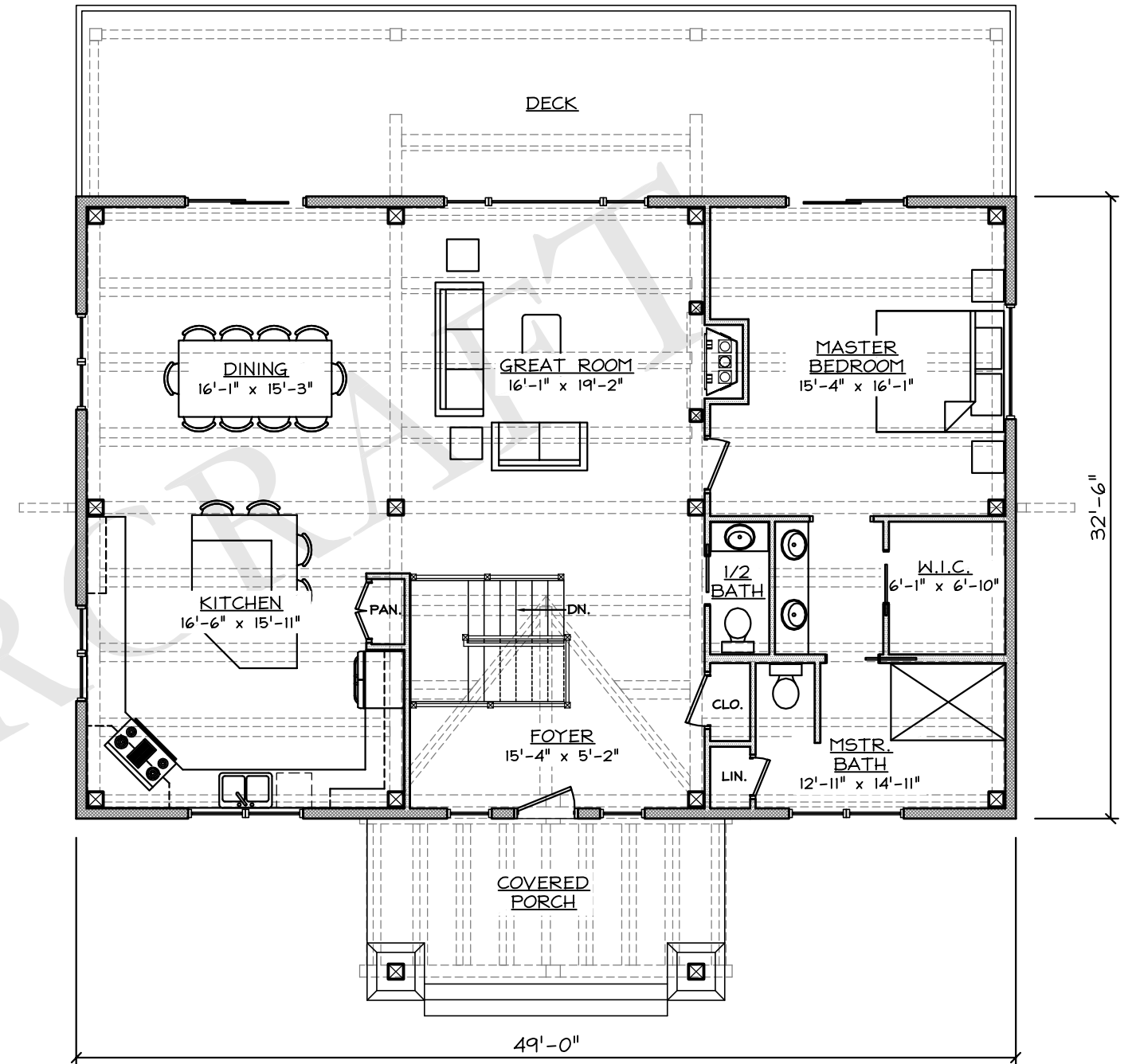


LOWER LEVEL FLOOR PLAN  
SCALE: N.T.S.

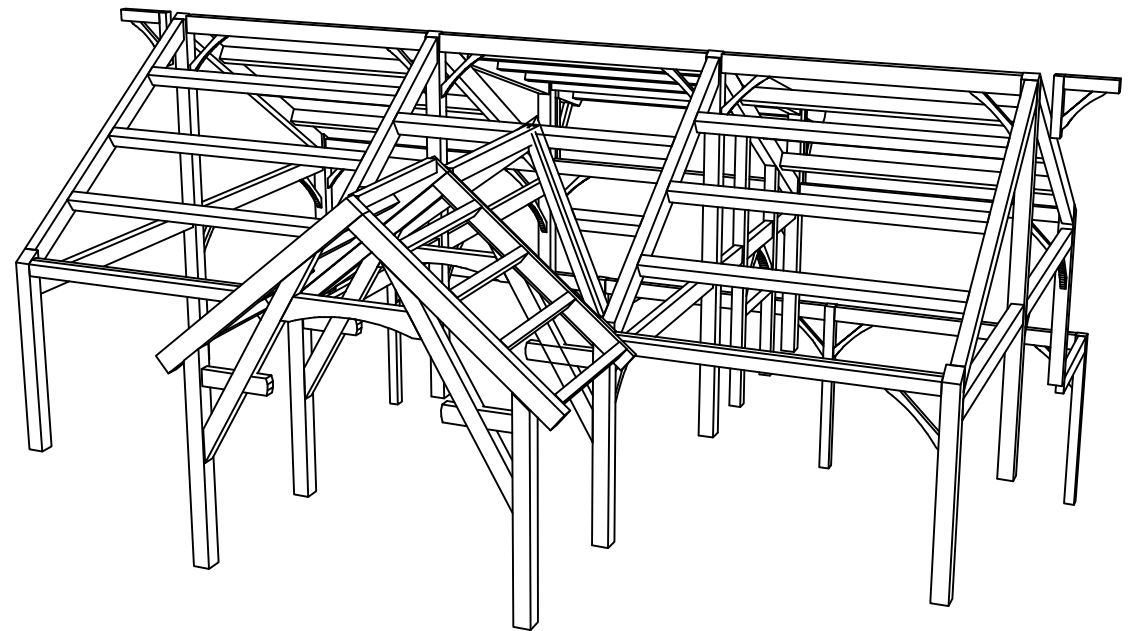
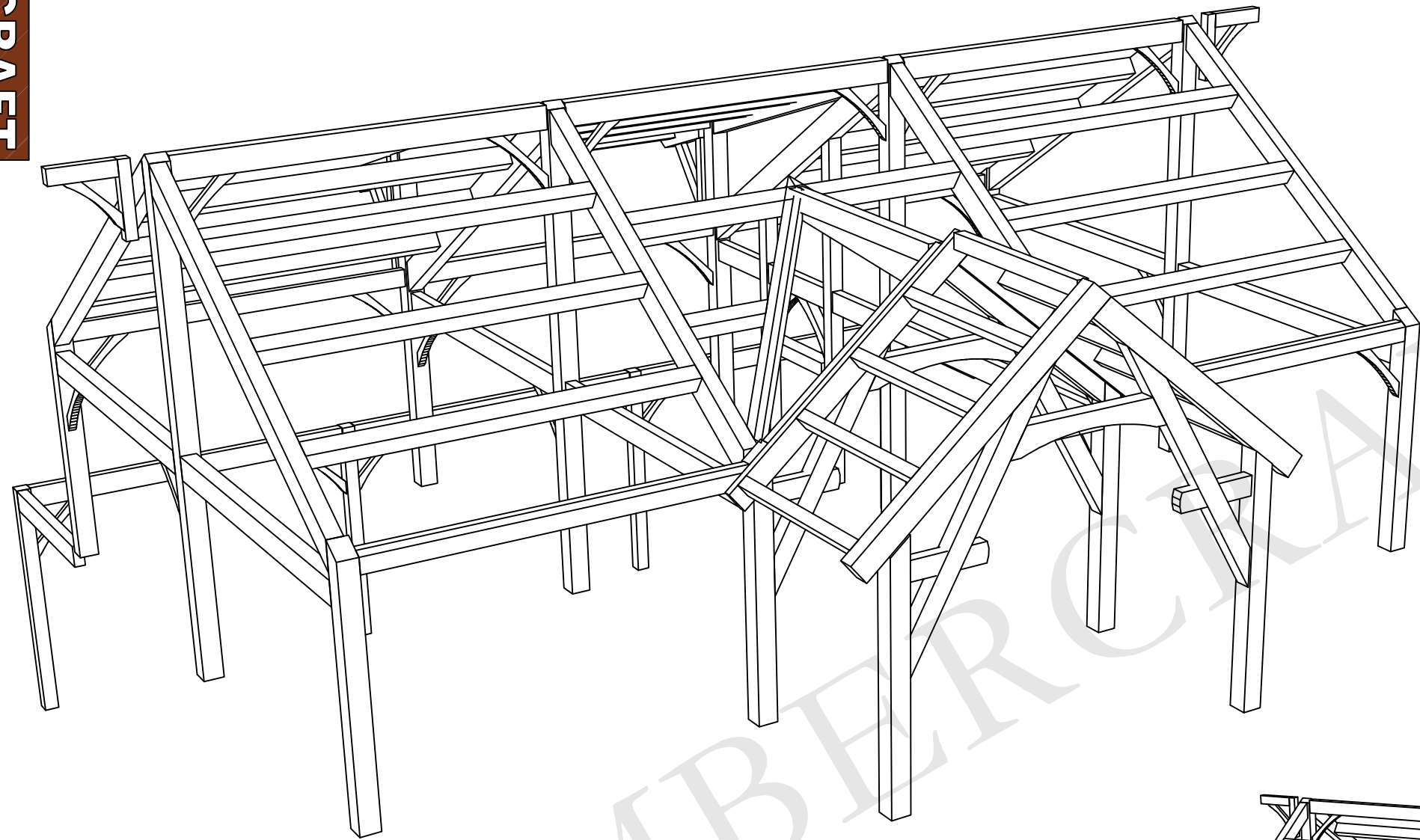


SQUARE FOOTAGE:	
LOWER LEVEL:	1202 SF
FIRST FLOOR:	1599 SF
TOTAL SF:	2,801 SF

FIRST FLOOR PLAN  
SCALE: N.T.S.

# THE BOYNE CITY

# TIMBERCRAFT®



TIMBERCRAFT

THE BOYNE CITY

TIMBERCRAFT®



FRONT ELEVATION  
SCALE: N.T.S.



RIGHT ELEVATION  
SCALE: N.T.S.



REAR ELEVATION  
SCALE: N.T.S.



LEFT ELEVATION  
SCALE: N.T.S.

THE BOYNE CITY

TIMBERCRAFT®